

KLA

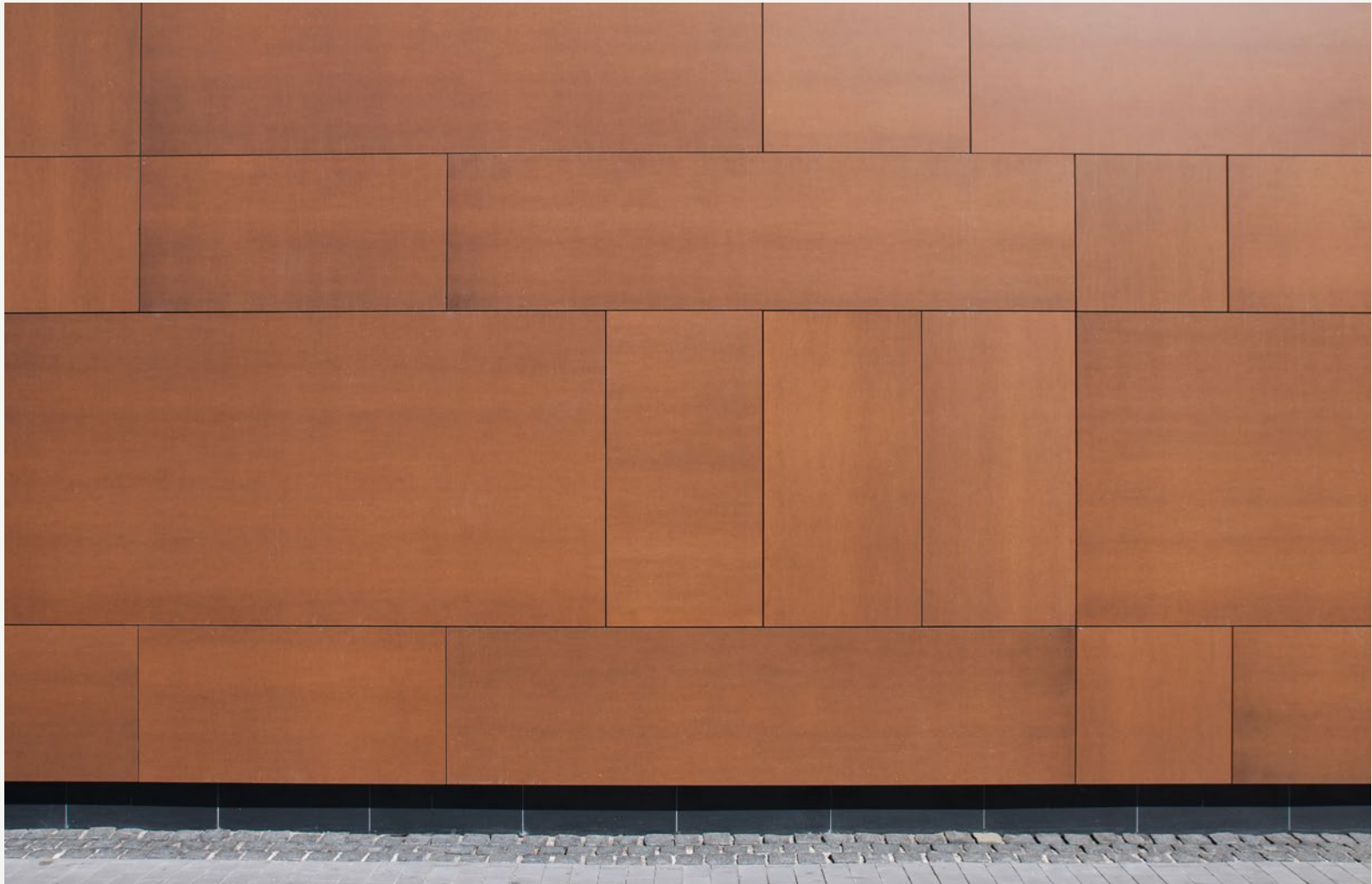
DI

TEK

EXTERIOR COMPACT LAMINATE

A low-angle photograph of a modern building's exterior. The facade is composed of light-colored, vertically-oriented panels with dark, recessed horizontal bands. The perspective creates strong diagonal lines across the frame. A cylindrical outdoor light fixture is mounted on the wall to the right. The text is overlaid on the left side of the image.

Kladitek, a creative material conceived for resilient and versatile outdoor requirements. Kladitek compact laminate panels are an ideal solution for exterior cladding as well exterior furniture such as terrace tables and children playgrounds. A material that merges architectural aspirations with avant-garde designs.





Technical data sheet

TEST	TEST REGULATION	INTERIOR APPLICATION <i>Test result</i>	EXTERIOR GRADE <i>Test result</i>
Specific weight	ASTM	≥ 1,45 g/cm ³	≥ 1,45 g/cm ³
Resistance to surface wear	UNI EN 438-4:2005	P. I. > 150 Wear value > 350	
Resistance to scratching	UNI EN 438-4:2005	Rating 2 for matt surface Rating 3 for Textured surfaces	
Resistance to wet heat	UNI EN 438-4:2005	Rating 3 for glossy finish Rating 4 for the other ones	
Resistance to immersion in boiling water	UNI EN 438-4:2005	Thikness increase: % (max) 2 mm ≤ t < 5 mm ≤ 5% t ≥ 5 mm ≤ 2% Appearance: glossy fi nish ≥ 3 Other fi nishes: ≥ 4	
Dimensional stability at elevated temperature	UNI EN 438-4:2005	% (max) 2 mm ≤ t < 5 mm L 0,40 T 0,80 t ≥ 5 mm L 0,30 T 0,60	% (max) 2 mm ≤ t < 5 mm L ≤ 0,40 T ≤ 0,80 t ≥ 5 mm L ≤ 0,30 T ≤ 0,60
Resistance to impact by large diameter ball	UNI EN 438-4:2005	2 mm ≤ t < 6 mm 1.400 mm t ≥ 6 mm 1.800 mm	2 mm ≤ t < 6 mm 1.400 mm t ≥ 6 mm 1.800 mm
Resistance to staining	UNI EN 438-4:2005	No change. Rating 5 for groups 1 and 2. Rating 4 for group 3	No change. Rating 5 for groups 1 and 2. Rating 4 for group 3
Resistance to dry heat (180°)	UNI EN 438-4:2005	Rating: not worse than 3 for glossy finish. Rating: not worse than 4 for other finishes	
Resistance to cigarette burns	UNI EN 438-4:2005	Appearance: degree ≥ 3	
Resistance to water vapour	UNI EN 438-4:2005	Appearance: glossy finish 3 Appearance: other finishes 4	
Resistance to climate change	UNI EN 438-6:2005		Appearance: ≥ 4 Flexural strenght: 0,95 Flexural module: 0,95
Flexural module	UNI EN 438-6:2005		≥ 9.000 Mpa
Strength to tensioning	UNI EN 438-6:2005		≥ 60 MPa
Resistance to UV rays	UNI EN 438-6:2005		Contrast 3 after 1.500 h Appearance rating 4 after 1.500 h
Resistance to atmospheric agents (moderate use)	UNI EN 438-6:2005		Gray scale rating 3 after 750 hours exposure Appearance 4 after 750 hours exposure
Resistance to atmospheric agents (severe use)	UNI EN 438-6:2005		Gray scale rating 3 after 1500 hours exposure Appearance rating 4 after 1500 hours exposure
Resistance to humidity	UNI EN 438-6:2005		Mass: 2 ≤ t < 5 7 T ≥ 5 5App. ≥ 4

Available Size (mm): 2800 x 1300

Available Thicknesses (mm): 6 – 8 – 10 – 12

Plain colors

K4022

K0622

K1402

K9022

K2622

K5322

K7122





K3802

K0288

K3362

K3158

K0388

K1022

K0488



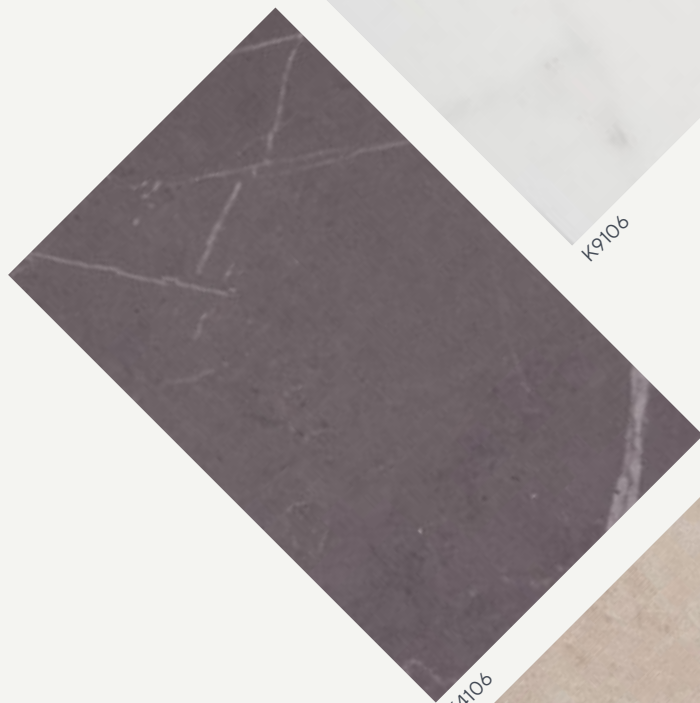
Sample



K2622

KLADITEK

Stones



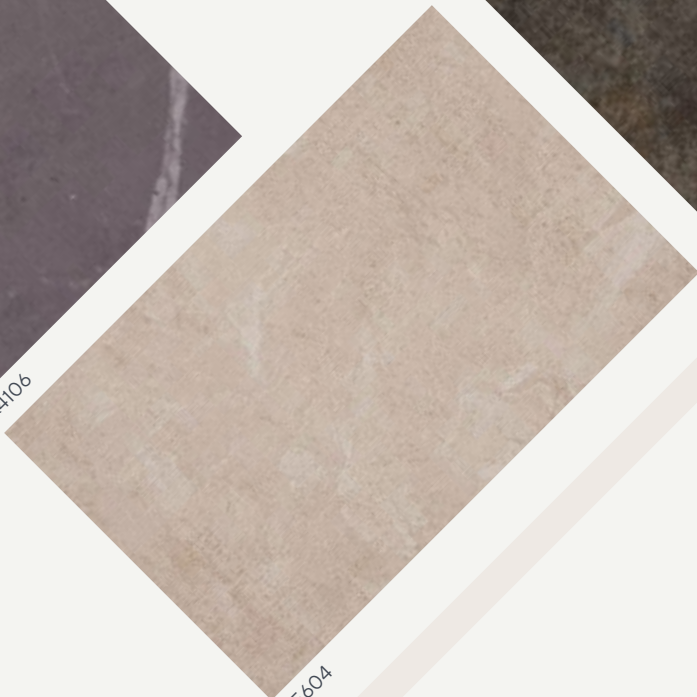
K4106



K9106



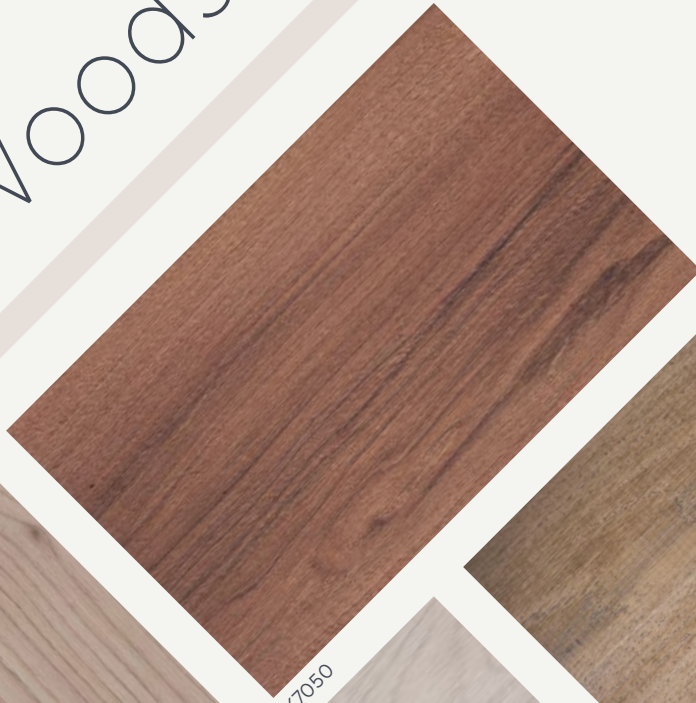
K5106



K5604



Woods



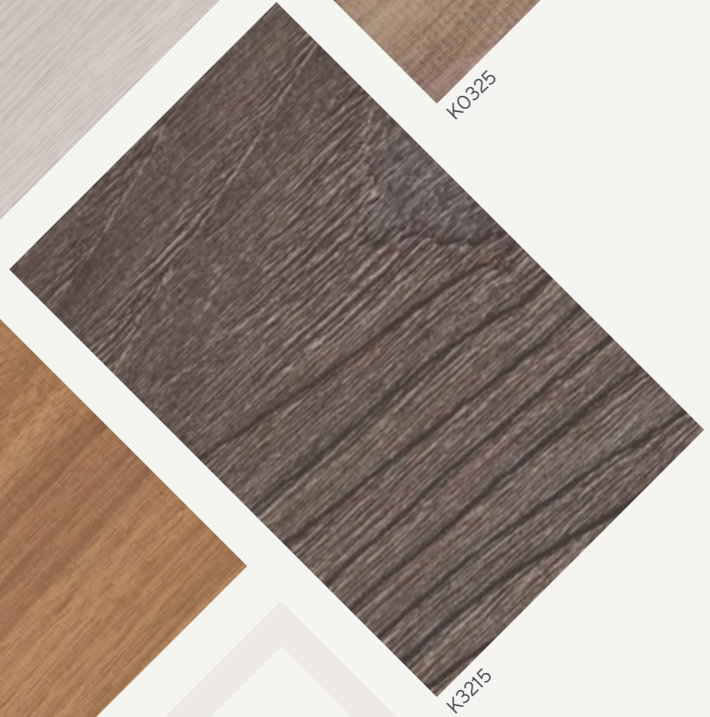
K7050



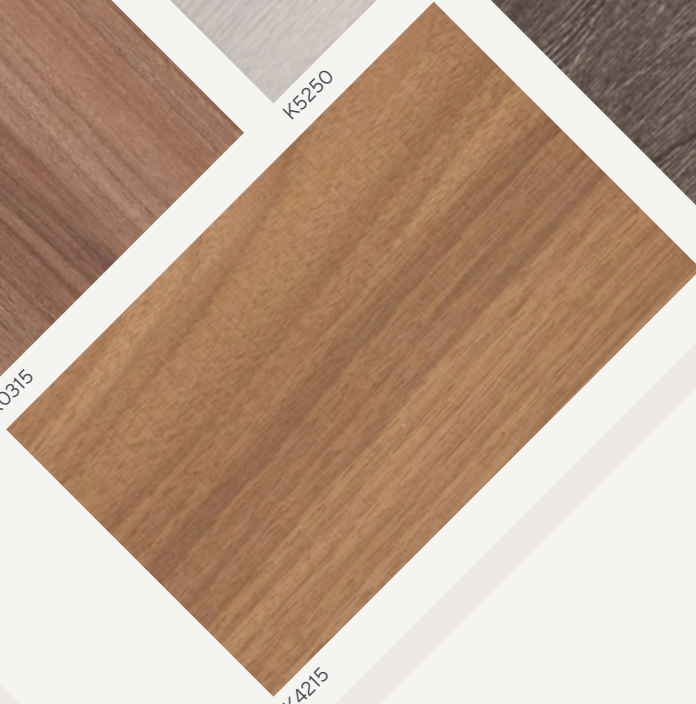
K0325



K5250



K3215



K4215

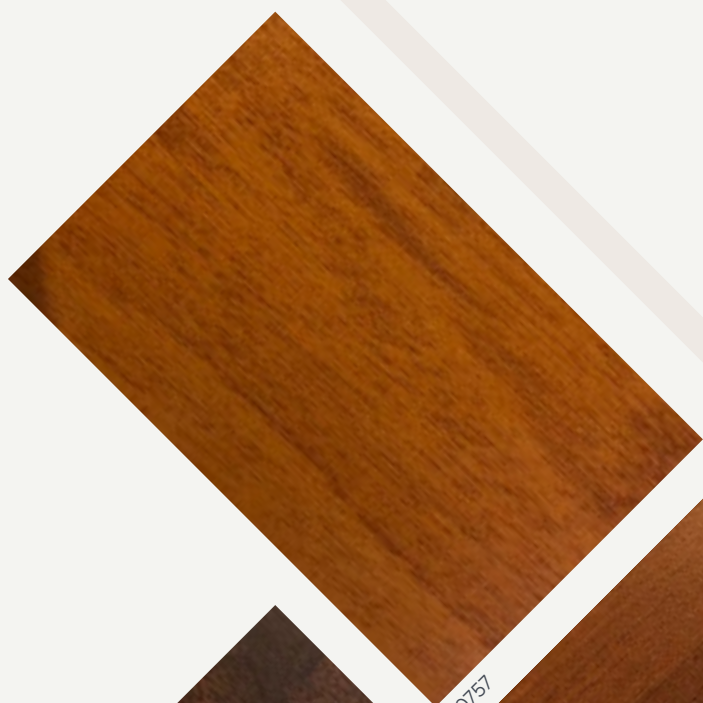


K0315

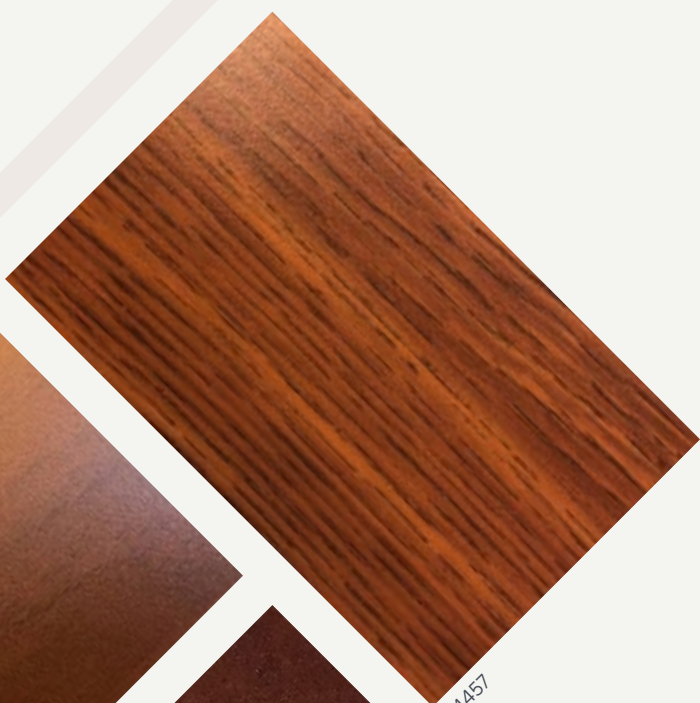


K9250

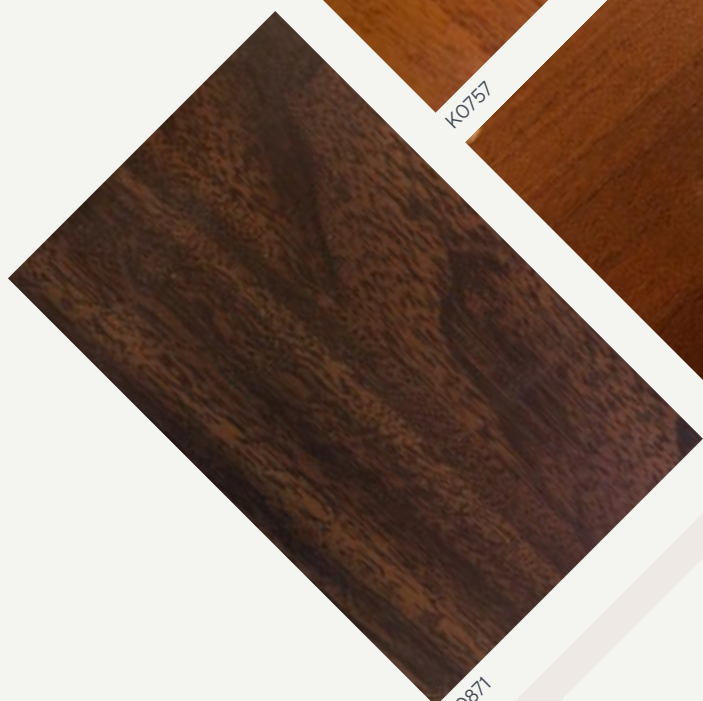




K0757



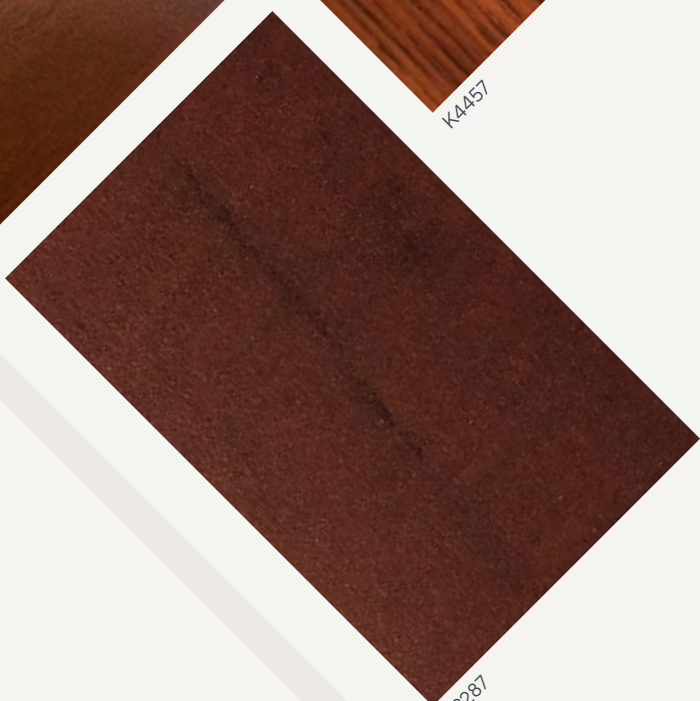
K4457



K0871



K1877



K2287

K

A product by



Distributed by



Made in Spain